

# (株) 食環境衛生研究所

略称/英文社名  
(株) 食環研/**Shokukanken Inc.**

Aug. 2022

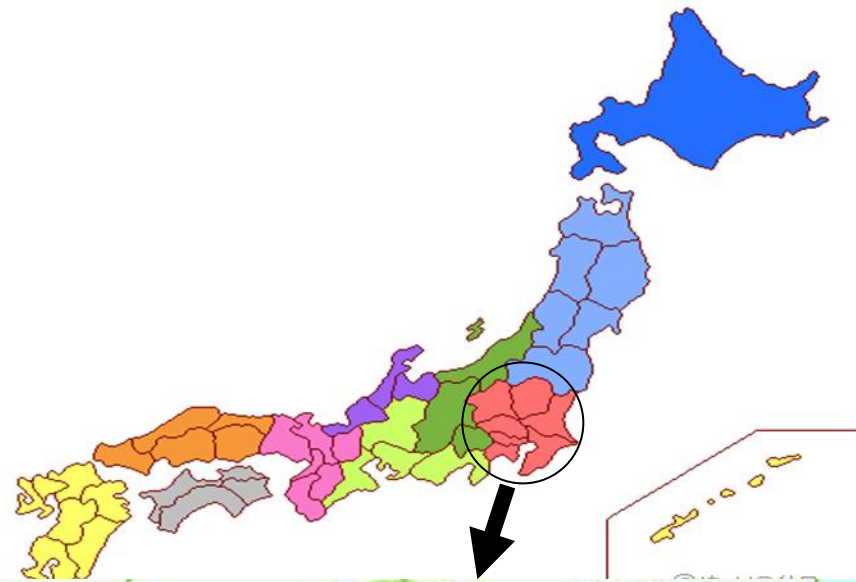
# Profile

- President: Kazuhiro Kubo
- Capital: 10,000,000 yen
- Founding: July 21, 1998
- Number of employees: approx. 130  
(including 17 veterinarians)
- Locations:
  - Head office
  - Quality control center
  - Analysis center for food and drugs
  - Tokyo branch
  - Tohoku branch
  - West Japan branch
  - Animal research center

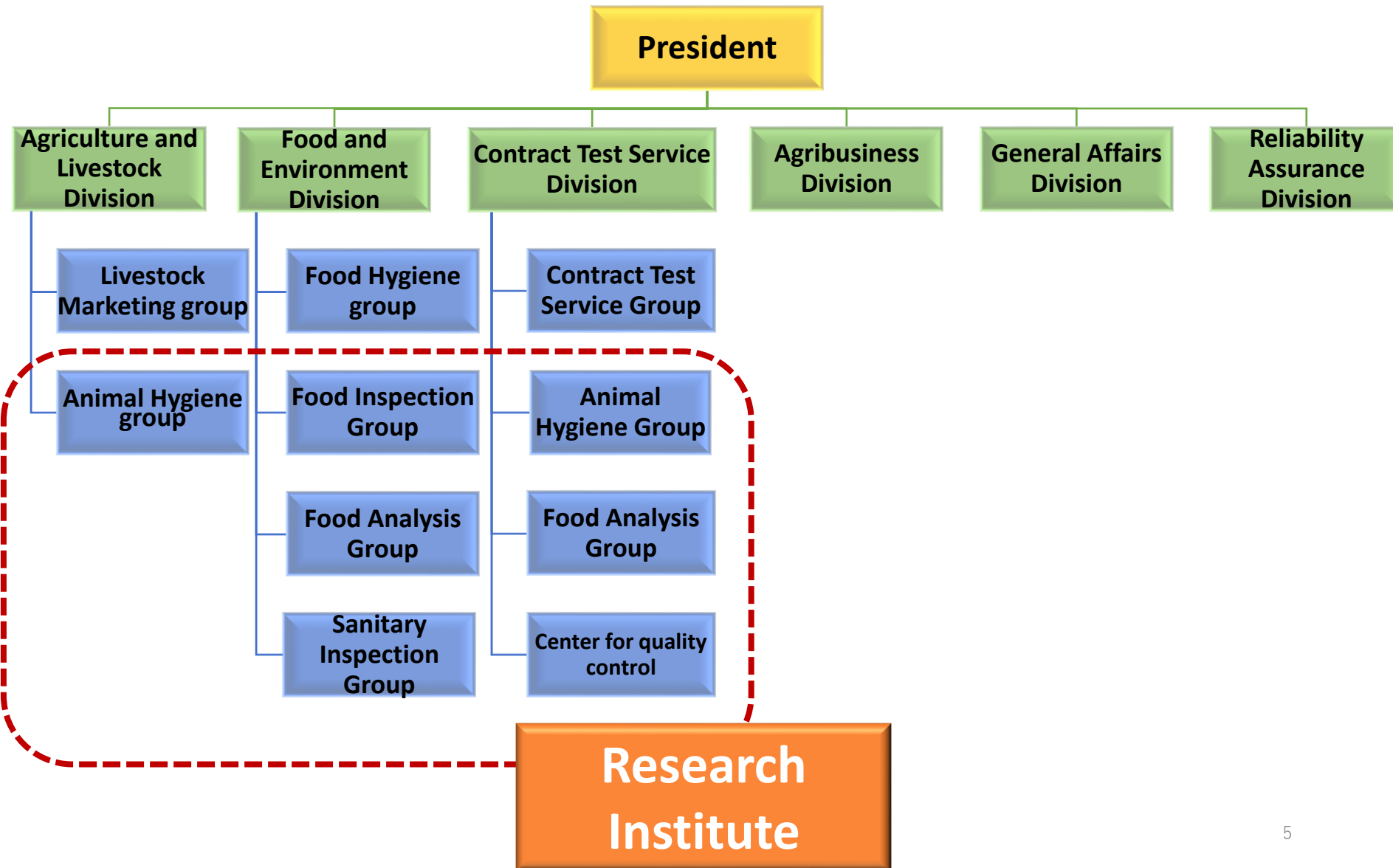
# Management Philosophy

We contribute to the improvement of safety on the production and processing of foods, thereby realizing a social structure that can sustain human health and a favorable living environment.

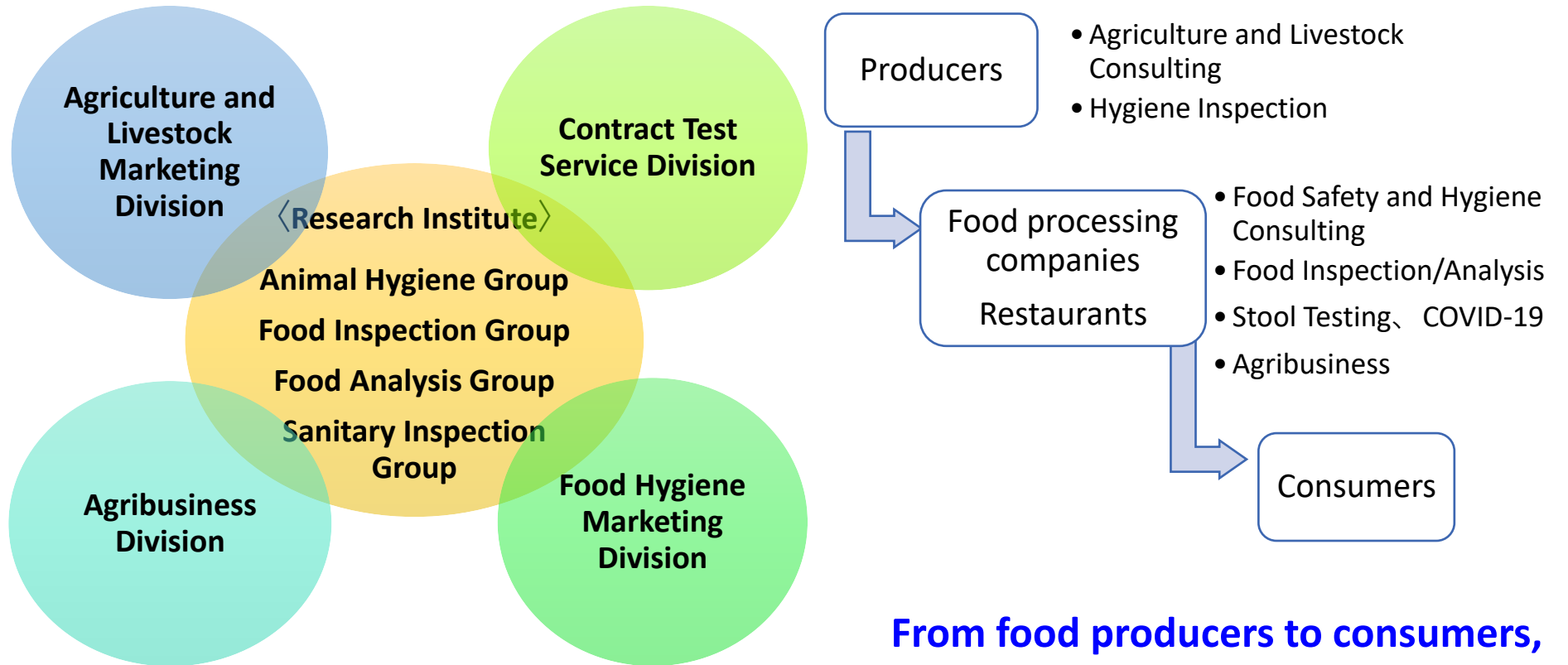
Head office:  
561-21 Arakuchi-machi, Maebashi, Gunma



# Organization

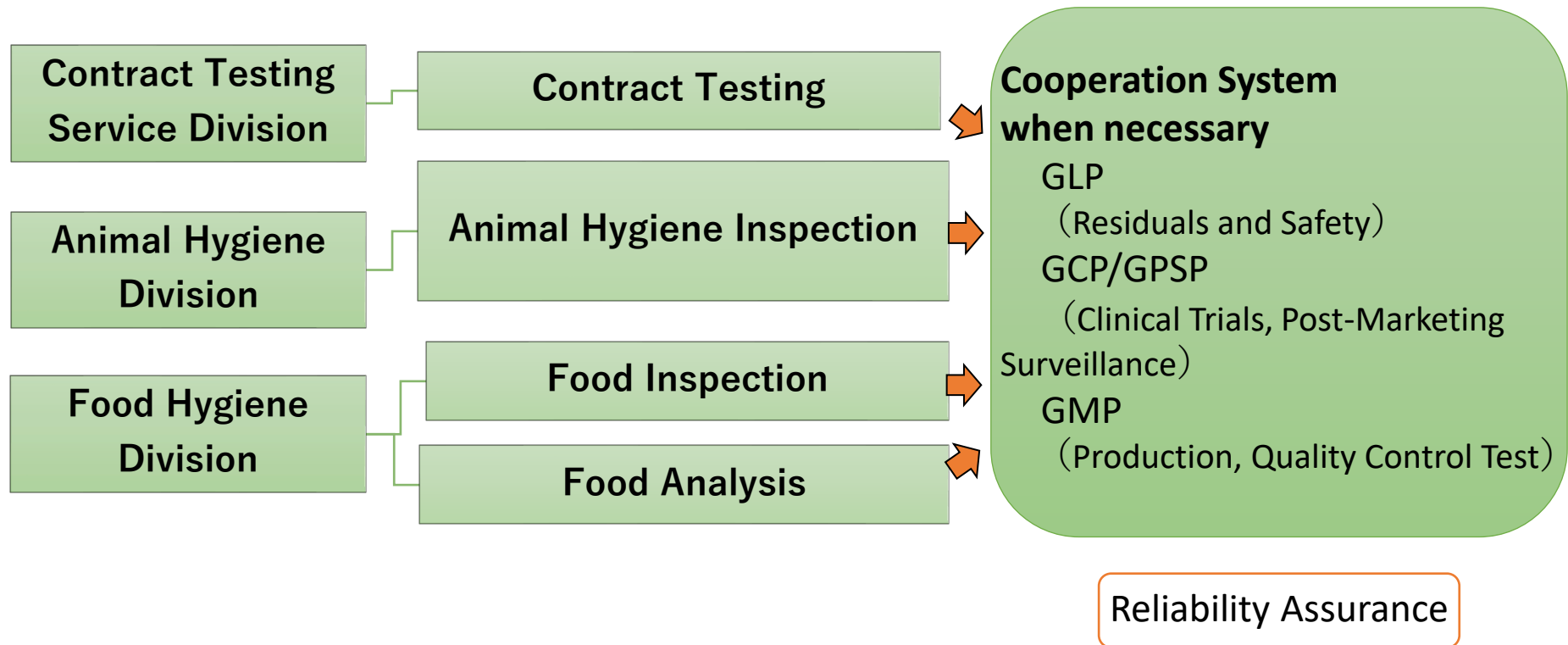


# Area of Business



**From food producers to consumers,  
we pursue a series of safety related to  
“FOOD”!**

# Testing System for Veterinary Drug Development



# Our Qualified Staff

- Pharmacists
- Veterinarians
- Clinical laboratory technicians
- Public health laboratory technicians
- Registered dietitian Nutritionists
- Nutritionists
- Experimental animal technicians
- Domestic animal artificial inseminationists
- Class I health supervisors
- Environment measurers (concentration)
- Class I working environment measurers
- Odor testers
- Class I water quality and pollution control managers
- Dioxins-related pollution control managers
- Asbestos work chiefs
- Asbestos diagnosticians
- Small business consultants



# Animal Research Center

— Animal Hygiene group —



# Animal Research Center

## — Animal Hygiene group —

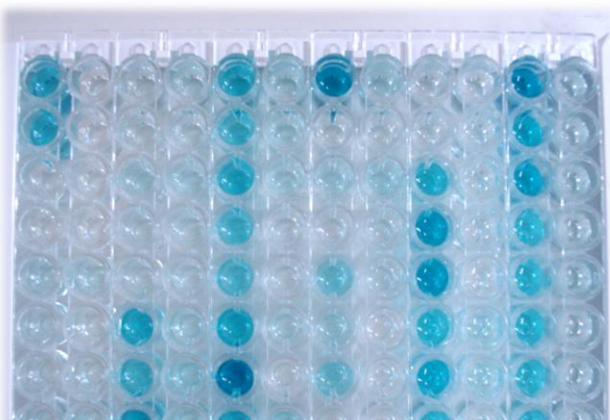


BSL-3 room

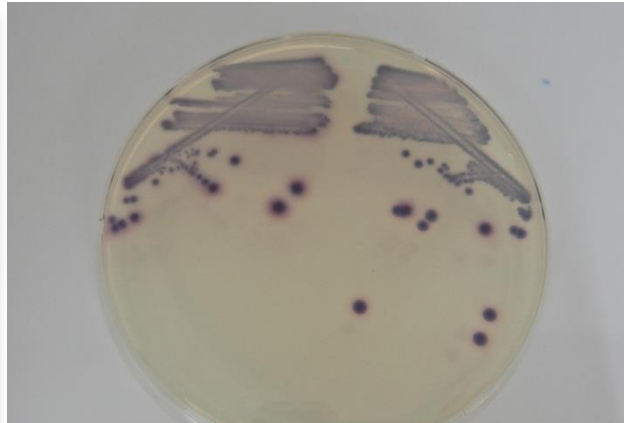


# Animal Research Center

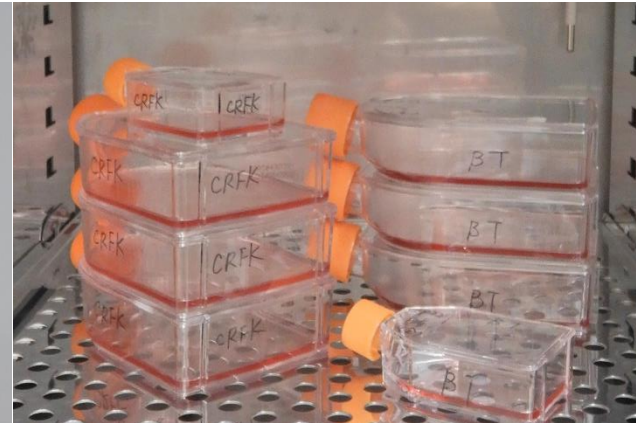
— Animal Hygiene group —



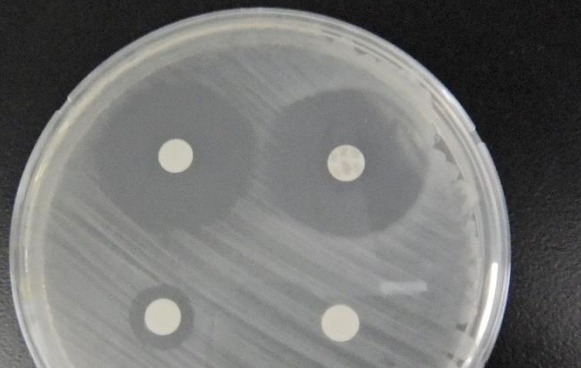
Serological testing



Bacterial testing



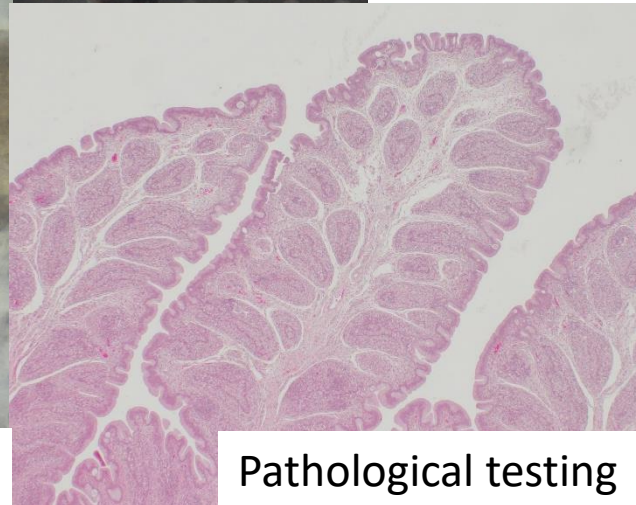
Viral testing



Microbial identification  
and antibiotic profiling

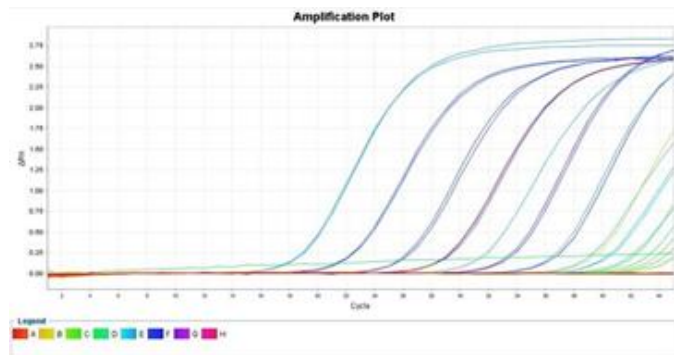
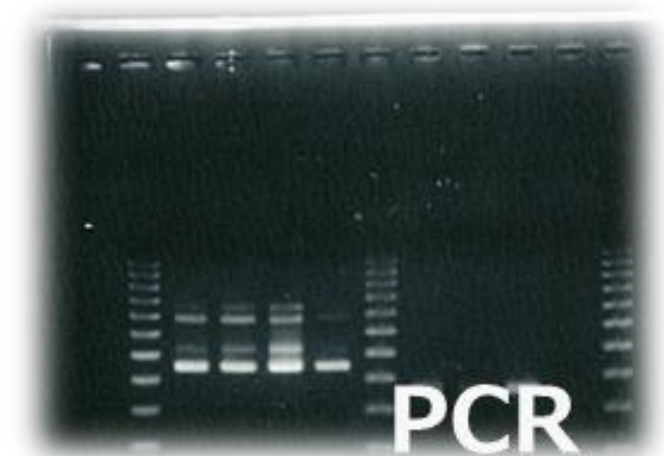


Parasite testing



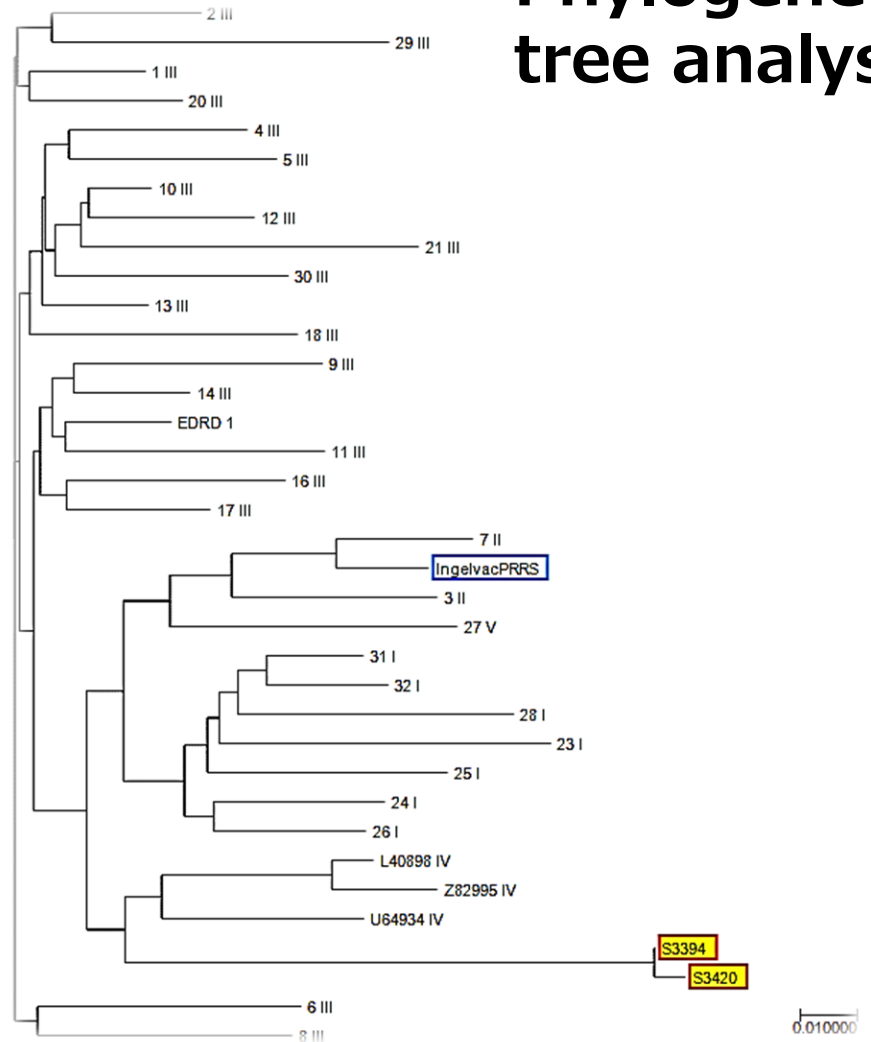
Pathological testing

# Antigen Detection by PCR



**Realtime PCR**

## Phylogenetic tree analysis



# Analytical Equipment



LC(Q)TOFMS



Amino Acid Analyzer



HPLC

# Analytical Equipment



GC/MS



GC/MS/MS



LC/MS/MS

# Analytical Equipment



ICP Luminescent Spectrophotometer (elemental analysis such as sodium)



Kjeldahl distillation Device (for protein)



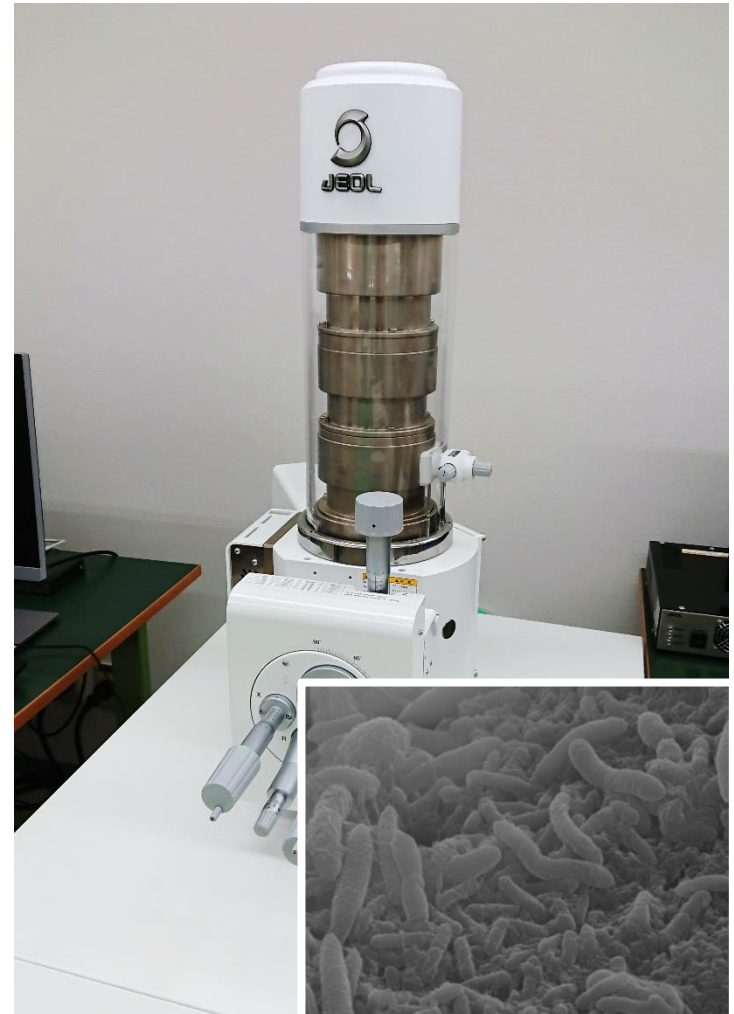
Fully automated Soxhlet Device (for lipids)



# Analytical Equipment



Germanium-based Semiconductor Detector  
(for radiation test)



Scanning Electron Microscope (SEM)



# Animal Facilities

@ head office



# Animal Health Support Center (AHSC)



# Animal Health Support Center (AHSC)

## Pigs





# Animal Health Support Center (AHSC)

## Cows



# Animal Health Support Center (AHSC)

## Chickens





# Consulting

