



(株) 食環境衛生研究所

略称/英文社名

(株) 食環研/***Shokukanken Inc.***

Aug. 2023

# Profile

- President: Kazuhiro Kubo
- Capital: 10,000,000 yen
- Founding: July 21, 1998
- Number of employees: approx. 130  
(including 17 veterinarians)
- Locations:
  - Head office
  - Quality control center
  - Analysis center for food and drugs
  - Tokyo branch
  - Tohoku branch
  - West Japan branch
  - Animal research center
  - TGC Toxicity testing center



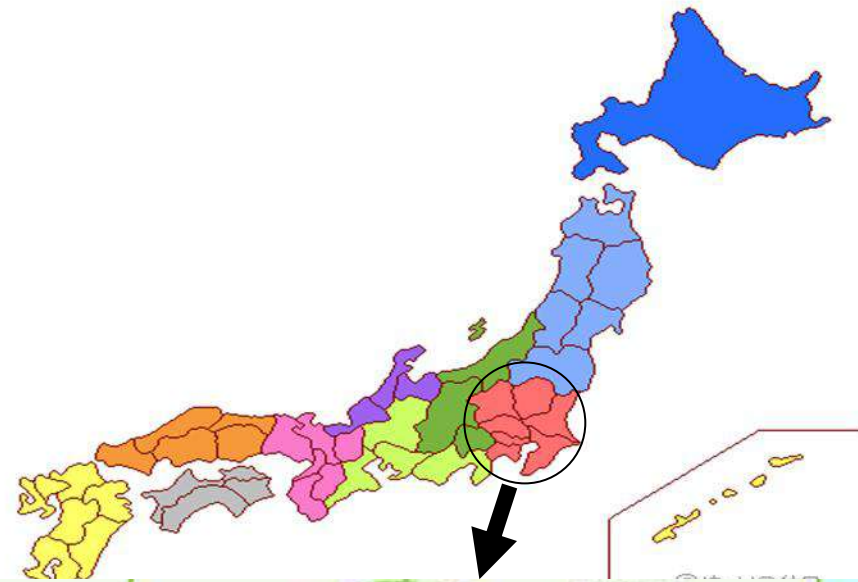


# Management Philosophy

We contribute to the improvement of safety on the production and processing of foods, thereby realizing a social structure that can sustain human health and a favorable living environment.



Head office:  
561-21 Arakuchi-machi, Maebashi, Gunma





株式会社食環境  
衛生研究所ARC

食環研TGC

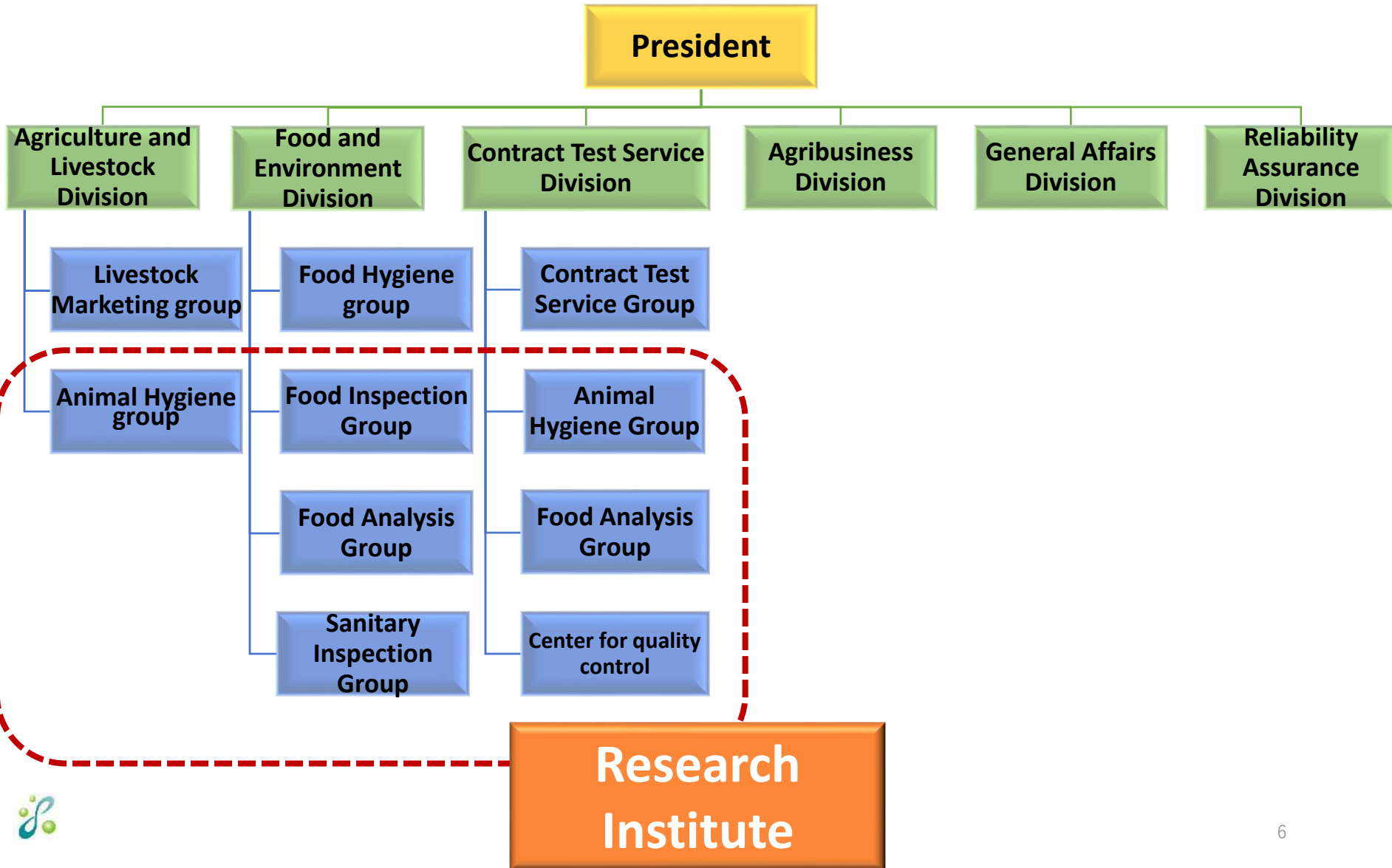
食環境衛生  
研究所本社

食環境衛生研究所

株式会社食環境  
衛生研究所 食品...



# Organization



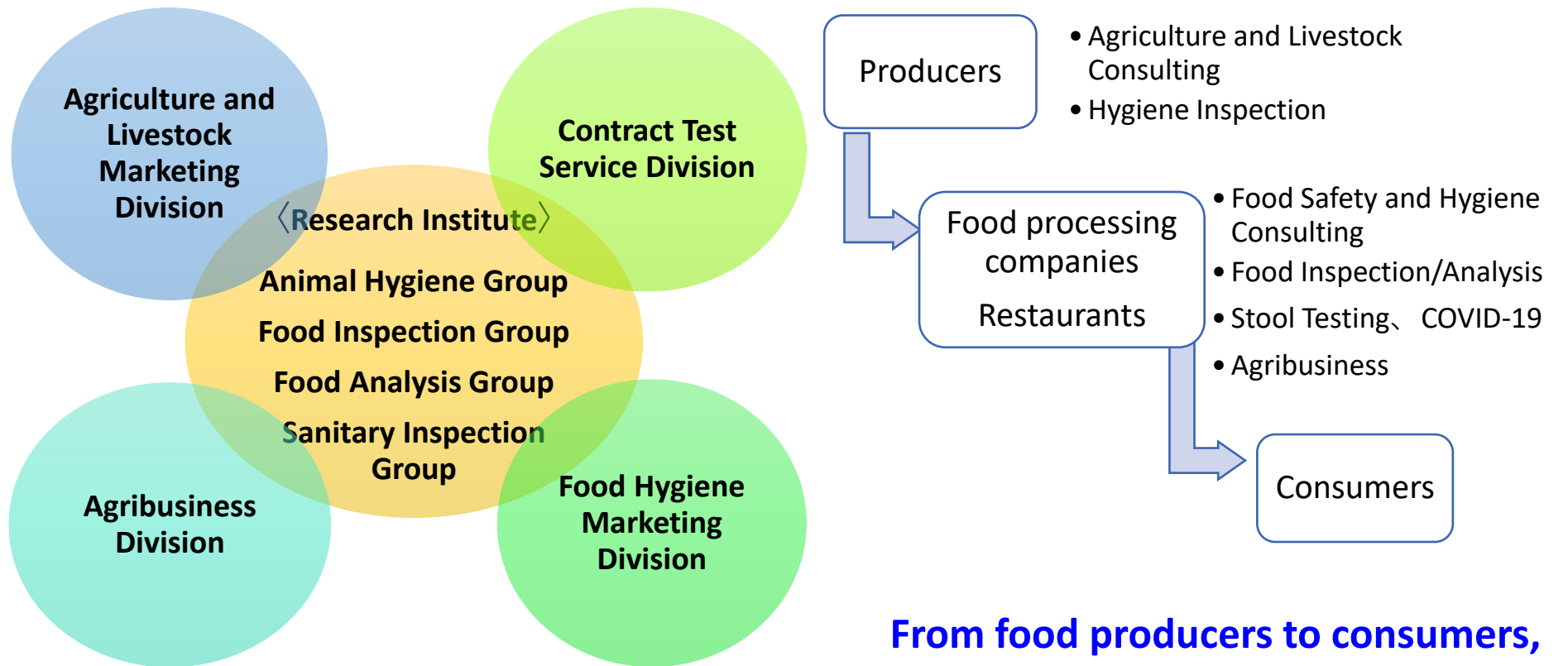


# Organization

- Study/Examination Group
  - Agriculture/livestock exam, food/environment exam (micro-bacterial exam, genetic diagnosis, residue of pesticide, antibiotic analysis)
- Testing/Research Group
  - GLP, GCP and GPSP studies to get or maintain the approvals of veterinary medicine
- Livestock Marketing Group
  - Sales of feed additives and soil improvement agent
  - Consulting
- Food/Environmental Health Marketing Group
  - Hygiene control training of the restaurants based upon micro-bacterial exam
  - Consulting
- Agriculture Business Group
  - Management of entrusted farm land/vegetable farm based on the soil and pesticide residue exam



# Area of Business

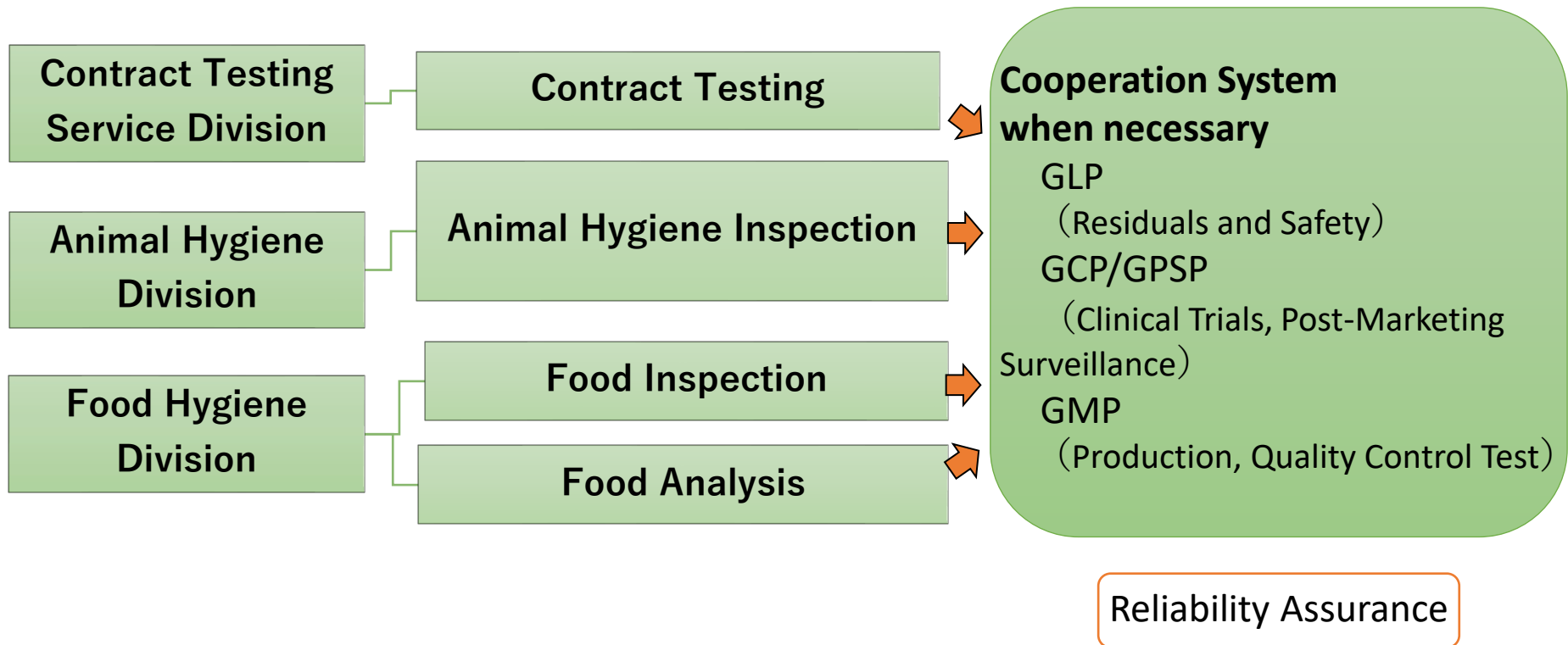


**From food producers to consumers,  
we pursue a series of safety related to  
“FOOD”!**





# Testing System for Veterinary Drug Development



# Our Qualified Staff

- Pharmacists
- Veterinarians
- Clinical laboratory technicians
- Public health laboratory technicians
- Registered dietitian  
Nutritionists
- Nutritionists
- Experimental animal technicians
- Domestic animal artificial inseminationists
- Class I health supervisors
- Environment measurers (concentration)
- Class I working environment measurers
- Odor testers
- Class I water quality and pollution control managers
- Dioxins-related pollution control managers
- Asbestos work chiefs
- Asbestos diagnosticians
- Small business consultants



# Study/Examination Group

## 総合研究所

### 食品分野

### Food

- 検便検査 Examination of feces
- レジオネラ属検査 Detection of Legionella
- 一般栄養成分等分析 Examination of general nutrient component
- 香港栄養成分分析 Examination of nutrient component according to Hong Kong method
- 食品保存試験 Food preservation test
- 異物異臭検査 Examination for foreign particles and odor
- アレルギー物質検査 Detection of allergic substances
- ペットフード検査 Examination of pet foods
- 細菌・ウイルス検査 Bacterial and viral detection
- カビ毒分析 Analysis of fungal toxin
- 水質検査 Water examination
- 放射能検査 Examination for radioactivity
- 残留農薬分析 Analysis of residual pesticide
- 残留動物用医薬品分析 Analysis of residual veterinary drugs

### 畜産分野

### Livestock

- 鶏 Chicken
  - 抗体検査 Antibody titration
  - 病性鑑定・細菌検査 Diagnosis (including bacterial detection)
  - 卵検査 (Egg examination)
- 豚 Swine
  - 抗体検査 Antibody titration
  - 病性鑑定・細菌検査 Diagnosis (including bacterial detection)
  - 豚品種識別検査 Examination of swine breed identification
- 牛 Bovine
  - 抗体検査 Antibody titration
  - 病性鑑定・細菌検査 Diagnosis (including bacterial detection)
- その他 Other
  - 畜産環境 Environment
  - 飼料分析 Analysis of feed
  - 肥料分析 Analysis of fertilizer
  - 肉質検査 Examination of carnosity





Animal Research Center  
– Animal Hygiene group –





# Animal Research Center

— Animal Hygiene group —





# Certifications & Accreditations

- Approved academic research organization compliant with the Act on Domestic Animal Infectious Disease Control (MAFF)
- Authorized to handle live pathogenic organisms of communicable diseases subject to regulatory control (MAFF)
- Verified to have control measures in place against dissemination of GMOs for Type 2 usage
- Licensed to receive imported hatching eggs (AQS)





# Animal Research Center

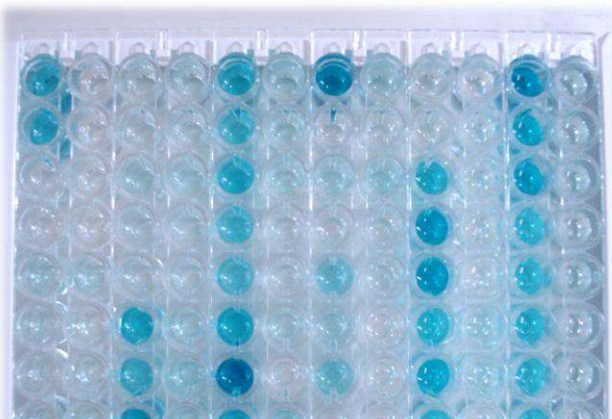
– Animal Hygiene group –



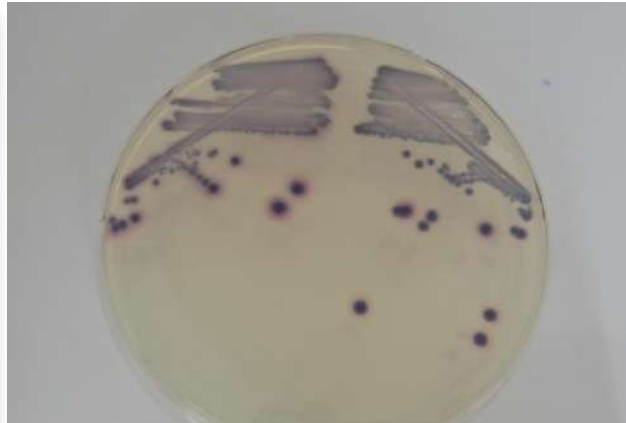
BSL-3 room

# Animal Research Center

— Animal Hygiene group —



Serological testing



Bacterial testing



Viral testing



Microbial identification  
and antibiotic profiling



Parasite testing



Pathological testing



# Animal Research Center

## – Animal Hygiene group –

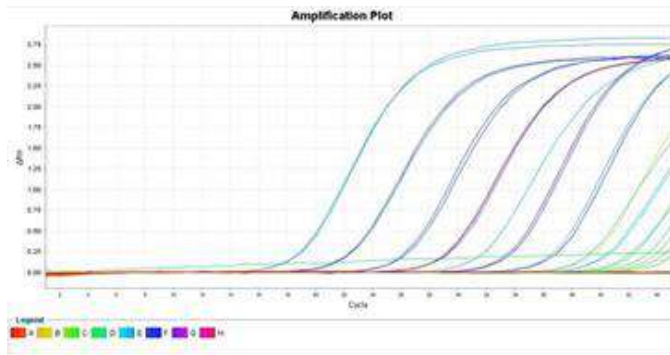
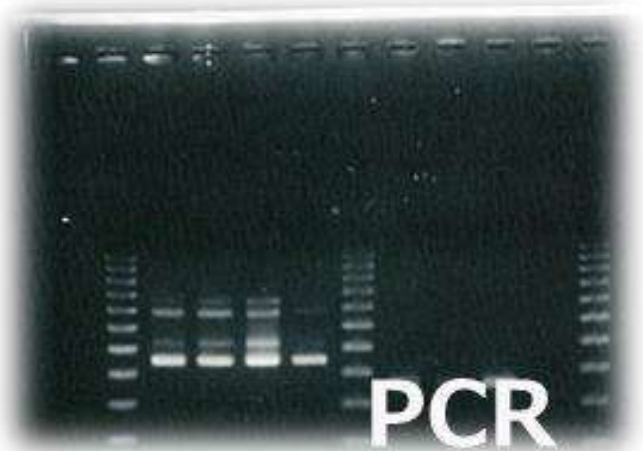


解剖室



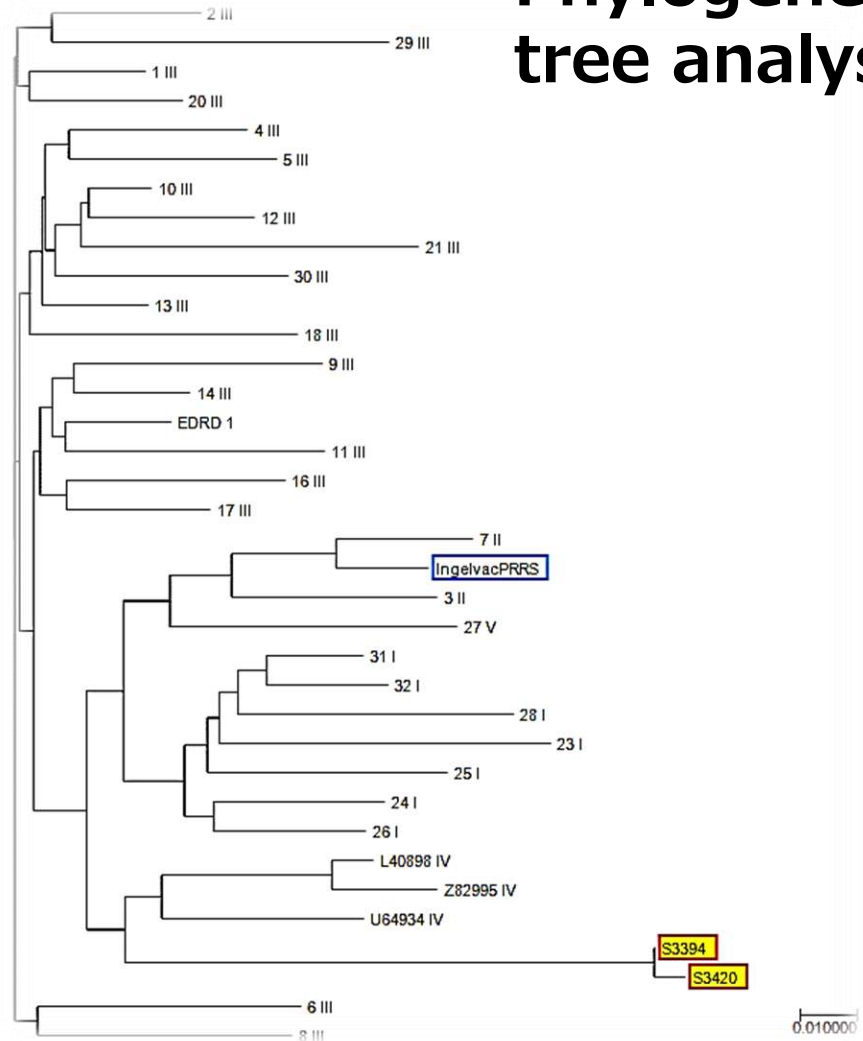


# Antigen Detection by PCR



Realtime PCR

## Phylogenetic tree analysis



# Safety Evaluation Center



# Analytical and Related Areas

## Certifications & Accreditations

- ISO/IEC 17025
- Registered clinical laboratory
- Official measurement certification provider
- Examination organization of the voluntary food hygiene control certification program
- JGAP-approved agricultural chemical residue laboratory





# Analytical Equipment



LC(Q)TOFMS



Amino Acid Analyzer



HPLC



# Analytical Equipment



GC/MS



GC/MS/MS



LC/MS/MS

# Analytical Equipment



ICP Luminescent Spectrophotometer (elemental analysis such as sodium)



Kjeldahl distillation Device (for protein)



Fully automated Soxhlet Device (for lipids)



# Analytical Equipment



Germanium-based Semiconductor Detector  
(for radiation test)



Scanning Electron Microscope (SEM)



# Testing/Research Group

## 受託試験部

- **General tests 一般受託試験**
  - Evaluation of anti-microbial activity
  - Identification of micro organisms
  - Challenge test using pathogens

etc.

- **Studies according to GCP or GLP**  
動物用医薬品試験（GCP・GLP）





## Whats we are

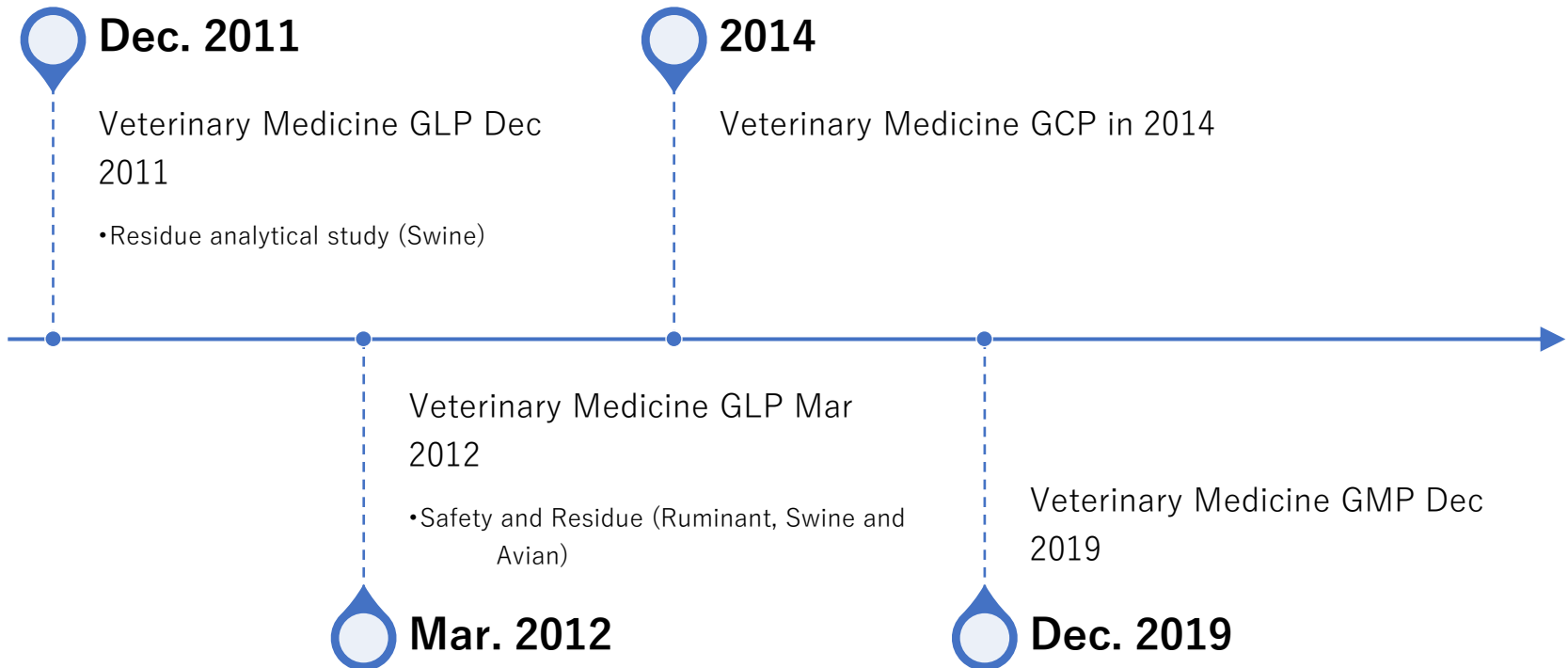
- Veterinary Pharmaceutical Consultation
- Clinical trials for animal drugs
- Quality control studies
- Specification testing
- Safety studies

As one of the few veterinary contract research organizations (CRO) in Japan, we are conducting a diverse range of preclinical and clinical researches every day. We also offer consulting services for clinical trials, regulatory requirements, and application and registration for all types of animal health products from pharmaceuticals, quasi-drugs, and medical devices to feed additives.





# GLP/GCP/GMP License



A background image showing a white laboratory rack filled with several test tubes. The test tubes have different colored caps (orange, blue, purple) and some have white labels with black text. The rack is slightly out of focus, creating a soft, professional look.

## **Our Capabilities**

- Consultation and support for animal drug application and registration
- Processes related to feed additive approval and listing
- Full evaluation of international product registration forms and dossiers
- Quality assurance auditing
- Gap analysis
- GCP studies (cattle, pigs, chickens, dogs, and cats)

## **GLP studies (cattle, pigs, chickens, dogs, cats, and fish)**

- 1) Animal drug safety studies
- 2) Animal drug residue studies
- 3) Biological safety studies





## **Quality control studies for veterinary pharmaceuticals**

- 1) Specification setting studies for drug substances
- 2) Stability studies
- 3) Safety studies
- 4) Potency/strength testing
- 5) Other quality-related studies

## **Post-marketing studies for veterinary pharmaceuticals**

- 1) GPSP-related procedures (preparation of re-evaluation application documents and related support)
- 2) GPSP studies (efficacy and safety)

## **GMP services for veterinary pharmaceuticals (packaging, labeling, and classified storage)**



## Certifications & Accreditations

### Veterinary Pharmaceuticals and Related Areas

- Animal drug GLP certification (MAFF)
- Feed additive GLP certification (MAFF)
- Animal drug GCP certification (MAFF)
- Approved academic research organization compliant with the Act on Domestic Animal Infectious Disease Control (MAFF)
- Authorized to handle live pathogenic organisms of communicable diseases subject to regulatory control (MAFF)
- Registered animal drug manufacturer and GMP facility (packaging, labeling, and classified storage)
- Verified to have control measures in place against dissemination of GMOs for Type 2 usage
- Accredited laboratory animal care facility compliant with animal welfare standards
- Licensed to receive imported hatching eggs (AQS)
- ISO/IEC 17025:2005



## Activities Examination/Studies around animal health

- GLP/GCP/GMP studies for veterinary drugs
  - Tissue residue: 20/year
  - Target animal safety:5/year
  - Field trials: 10 – 20/year
- Others
  - Bacteria isolation and identification
  - Diagnosis of infectious disease
  - Antibody titration:
  - Quality control
    - Test for release
    - Stability
    - Basic study for setting up of specification and QC methods





# Animal Facilities

@ head office

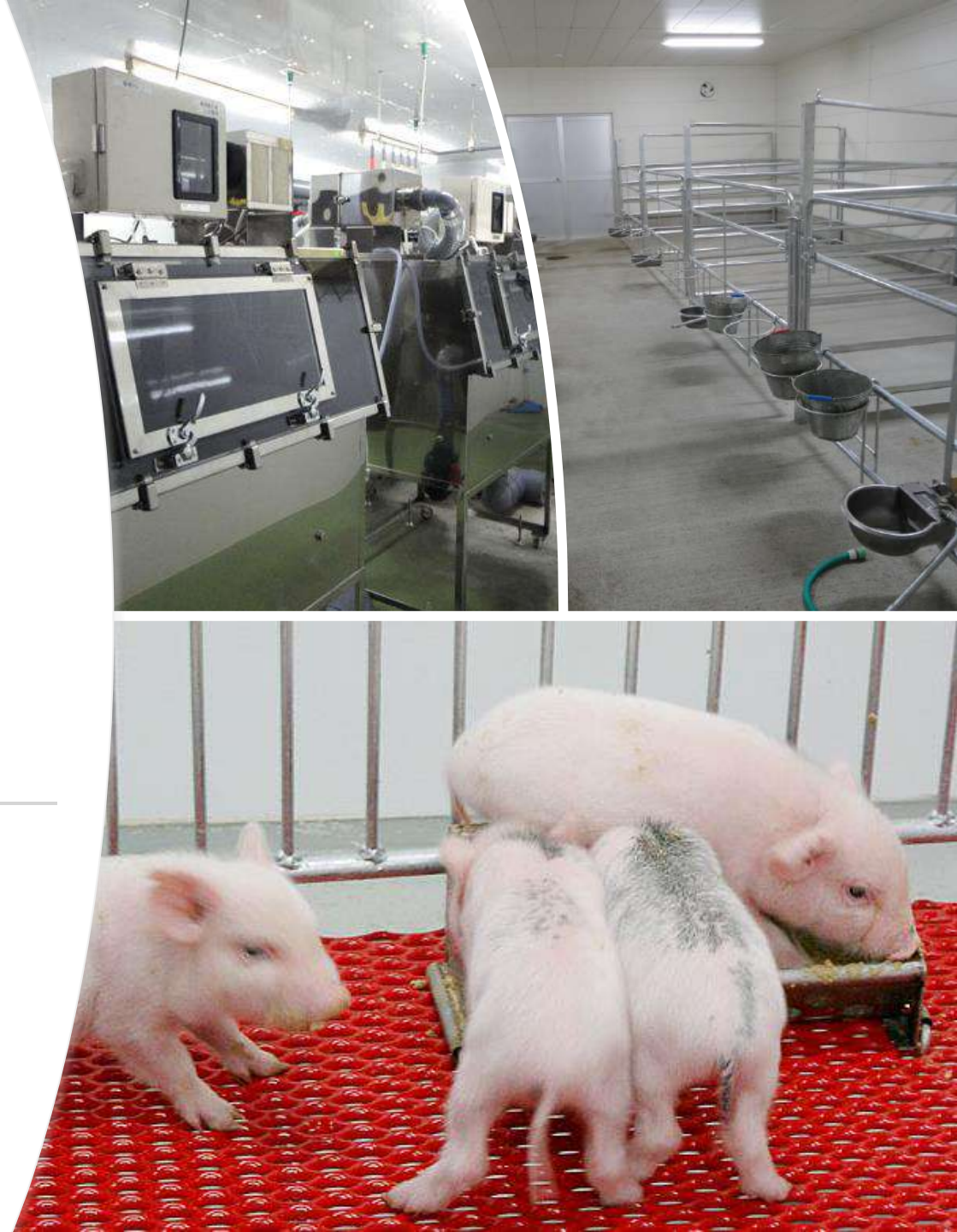






# Animal facilities (2)

---



- 
- **Animal facilities (3)**





# Animal Health Support Center (AHSC)

## Pigs



# Cows

- Animal Health Support Center (AHSC)





# Chickens

---

- **Animal Health Support Center (AHSC)**





# Animal Health Support Center (AHSC)

- Fish



# Consulting





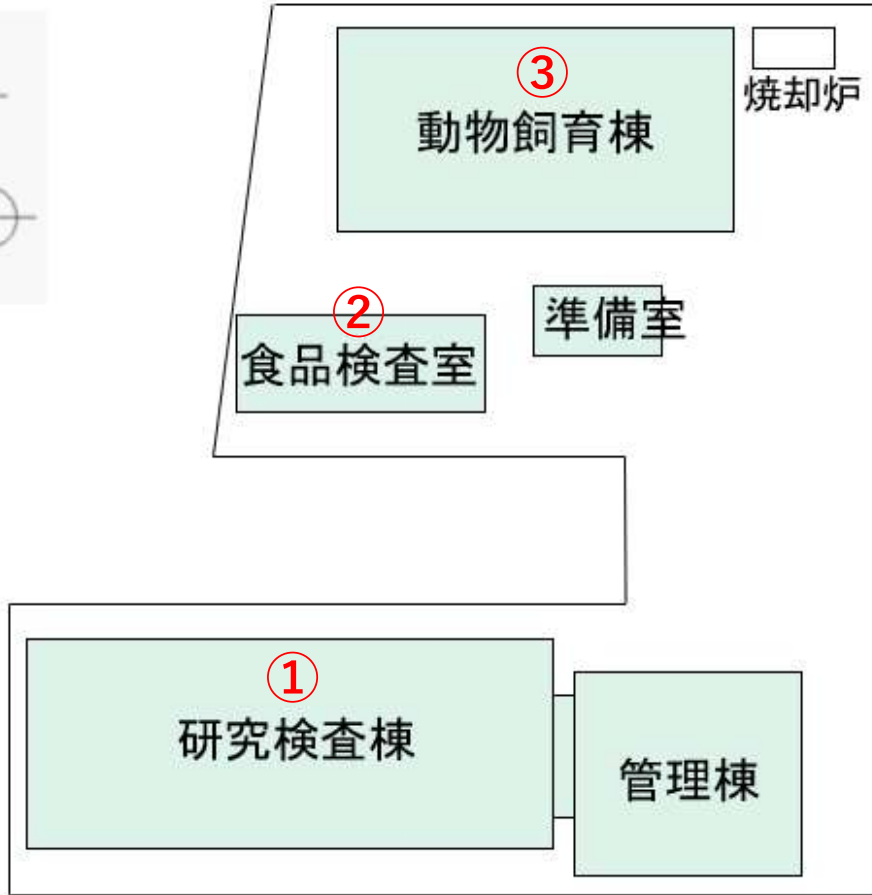
# Activities in Swine and Avian Fields

- Management consultant
  - Swine Farm: 200 (All prefecture except Okinawa)
  - Poultry Farm: 12 (Kanto and Tohoku area )
- Presentations and Publications (2011 to 2023)
  - 30 presentations:
    - Japanese Society of Veterinary Science
  - 2 publications:
    - Journal of the Japan Veterinary Medical Association
  - Serialize articles:
    - The pig magazine and Pig Journal





# Other Facilities



本社見取り図



④ 品質管理センター



⑤ AHSC





# Other Facilities(2)



TGC